

# ICI-Pacs Installation and Setup Instructions

## Software Setup

### 1. Software Key Installation

- Copy Hinstall program from install CD to C:\ drive root
- Take off the read only properties
- Double Click Hinstall icon and follow on screen instructions.  
Answer yes to install the program.
- Perform typical installation
- Install License Key to Printer Port OR USB Port

### 2. ICI-PACS Installation

- Copy the folder named PacsDir to the C:\ hard drive on the computer system.
- Remove all read-only properties from all files copied
- Set the System **Environment Variable** to:  
Variable Name: PACS\_DIR  
Variable Value: C:\PacsDir\ICI-PacsDicom  
\*(where C:\ is drive location you copied to)

**(If you are not sure how to set-up the environment variable, contact your system administrator.)**

- Open the file ICIPACS.cfg file in the folder ICI-PacsDicom (located in the folder named PacsDir on the C:\ drive) and verify that the target drive of the managers entry is the drive letter where the PACS programs exist.  
(Note: The default is C:\PacsDir\ICI-PacsDicom.)
- Open the folder C:\PacsDir\ICI-PacsDicom and create a shortcut of PACS3.exe to the desktop.  
Rename the shortcut ICI\_Pacs (on the desktop too)
- Launch the program from the desktop and setup system parameters discussed earlier

**Continued on the Next Page**

### **3. DICOM Storage Class SCP Installation**

This allows DICOM Image Data from any Ultrasound System that is DICOM 3.0 Compliant to send Image Data directly to the ICI-Pacs Image Management Software. Image Data will be stored in the WorkDir any time the Computer System running the ICI-Pacs Software has been properly configured and is turned on and running. The DICOM SCP, CicadaSSCP runs on the specified computer and runs as a Windows Service. The program will continually listen for DICOM in-coming connections and receive Image Data as it is sent from the connected DICOM Compliant Ultrasound System. The ICI-Pacs viewing software program (Pacs3.exe) does not need to be launched in order to receive Image Data.

The DICOM SCP, CicadaSSCP has been designed to work with one ultrasound system in the DICOM configuration. Imaging Concepts, Inc does not take any responsibility for Image and Patient file integrity where more than one ultrasound system is connected. Two or more ultrasound systems may be connected, however, performance will be determined by the specifications of the computer system where the CicadaSSCP has been installed and the configuration of the local area network and network configuration speeds.

When connecting two or more ultrasound systems, the computer specifications must be of the highest possible standards.

Some ultrasound manufacturers report DICOM errors to the end users of their systems. If image data is not accepted by the ICI-Pacs system for some reason, bad network connection, wrong address applied at DICOM setup, etc... some ultrasound systems will report the error, but not all ultrasound manufacturers are fully compliant.

**Please follow the instructions that follow to install the ICI-Pacs DICOM SCP, CicadaSSCP Service on your computer system.**

**Cotinued on the Next Page**

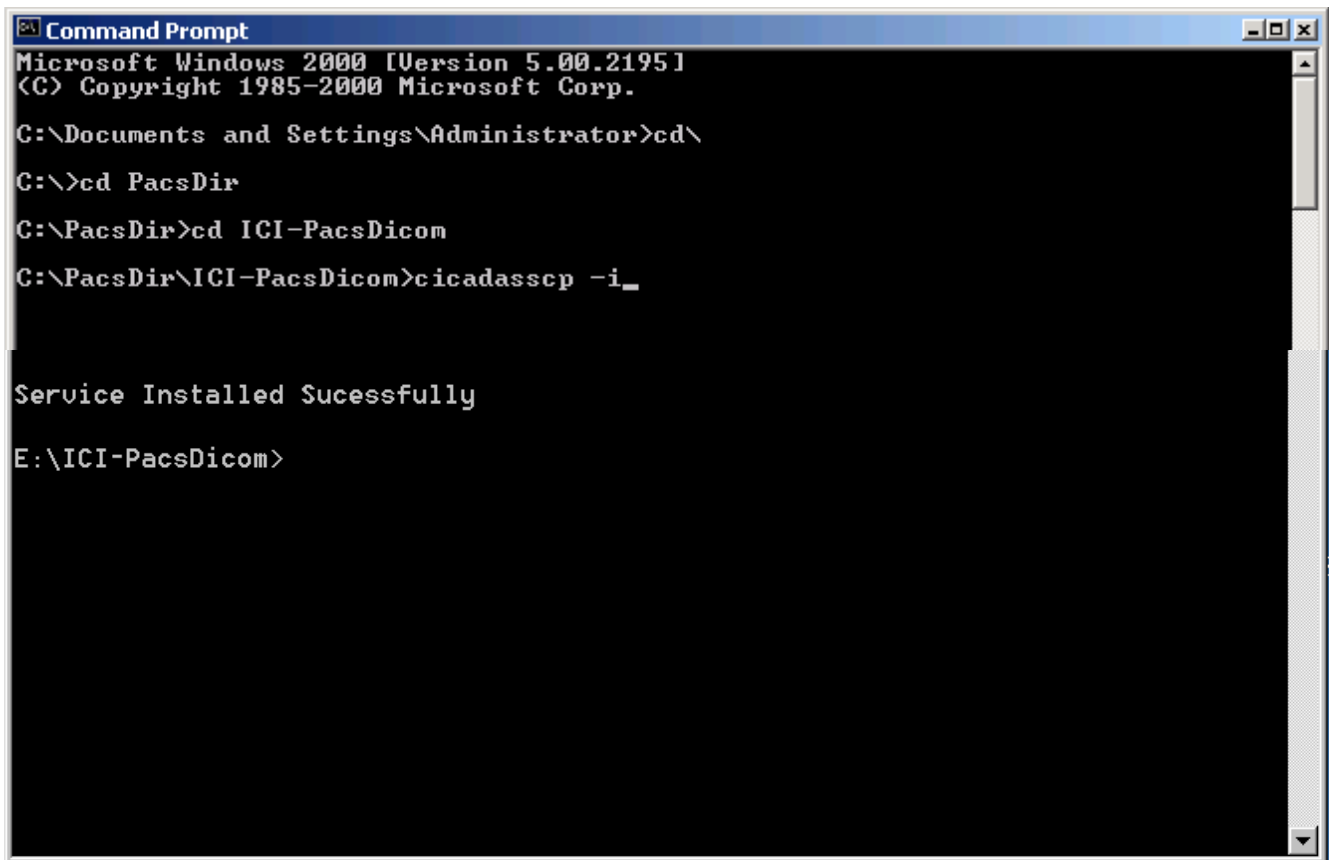
# ICI-PACS

## DICOM Store Installation instructions for the ICI Storage Class SSCP

These instructions apply to a Win2000 operating system. For WinXP or WinNT, directions will not be the same but should be very similar.

1. Make sure the program CicadaSSCP.exe is in the ICI-PacsDicom folder already located on the computer system.
2. Make sure the Environment Variable for ICI-Pacs is registered as a System Variable. This should have already been accomplished in a previous section for the ICI-Pacs Setup.
3. Install the CicadaSSCP.exe program as a computer service. At a DOS prompt, go to the directory where the CicadaSSCP.exe program is installed and type `cicadasscp -i`  
Example: At the C Prompt type `CD PacsDir`, push enter key  
At the `C:\PacsDir` Prompt type `CD ICI-PacsDicom`,  
The screen should now display `C:\PacsDir\ICI-PacsDicom`  
Type `cicadasscp -i`

You should get the message that the service was installed successfully. See sample diagram below.



```
Command Prompt
Microsoft Windows 2000 [Version 5.00.2195]
(C) Copyright 1985-2000 Microsoft Corp.

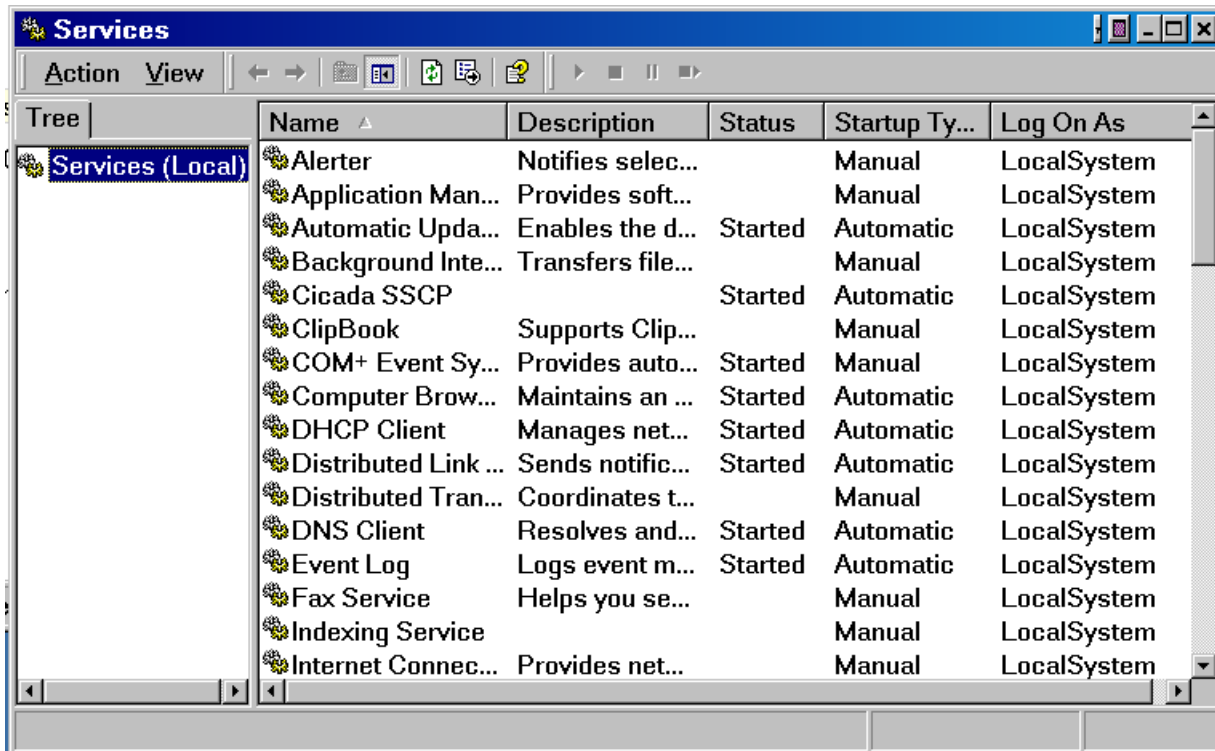
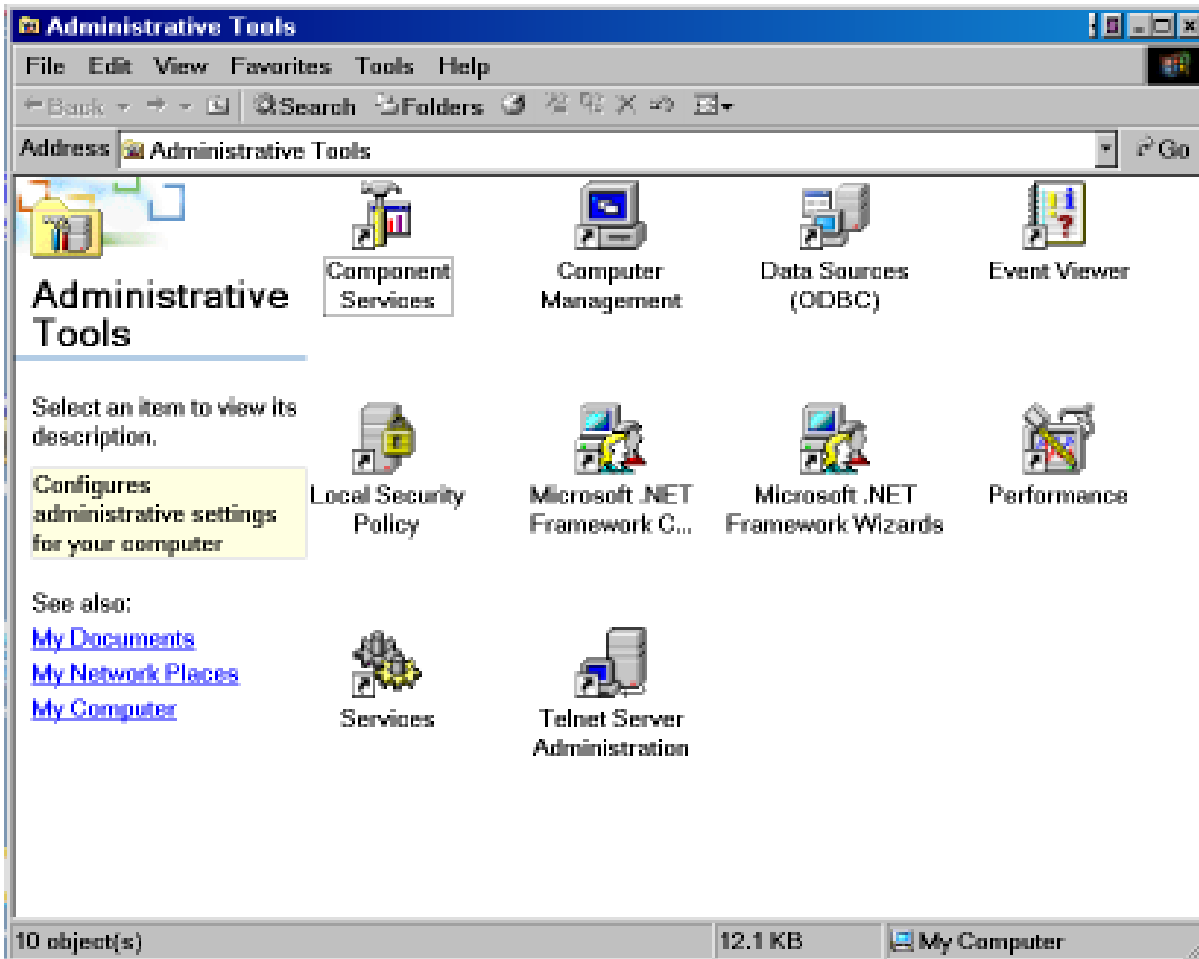
C:\Documents and Settings\Administrator>cd\
C:\>cd PacsDir
C:\PacsDir>cd ICI-PacsDicom
C:\PacsDir\ICI-PacsDicom>cicadasscp -i_

Service Installed Sucessfully

E:\ICI-PacsDicom>
```

4. Configure the CicadaSSCP Service. Open the Control Panel, Double Click on Administrative Tools. Double Click on Services ICON. Configure all the TABS per the following Diagrams and Instructions.

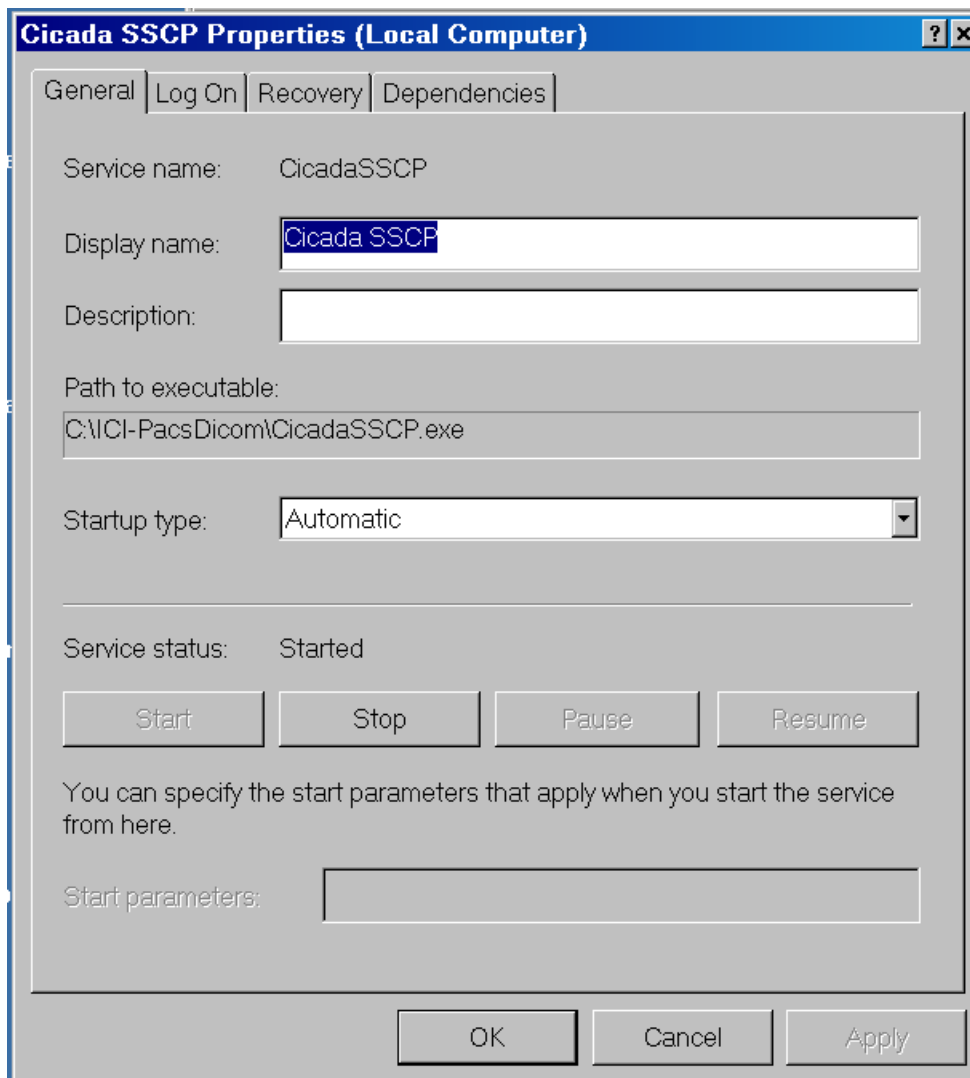
**Cotinued on the Next Page**



Computer Services Window

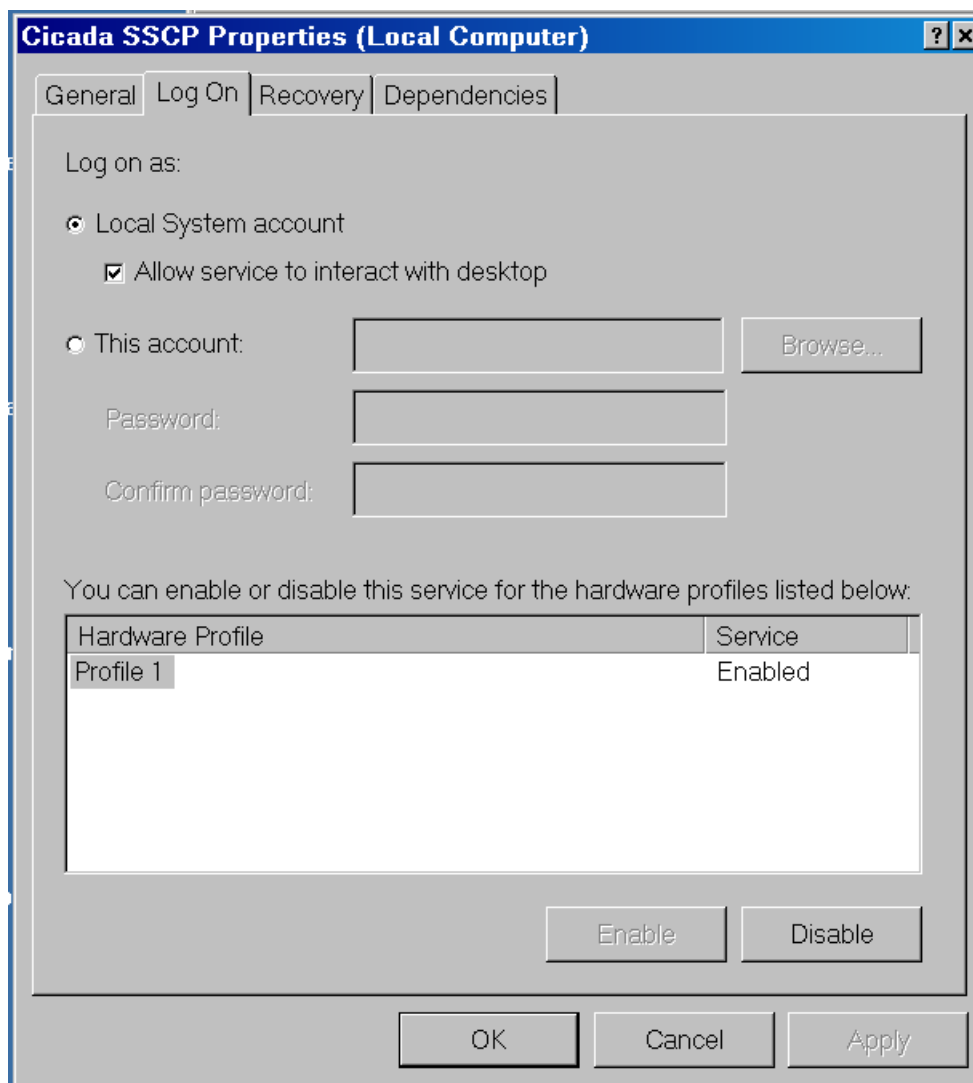
Right Click on CicadaSSCP and scroll to Properties. Left Click on Properties.

**Cotinued on the Next Page**



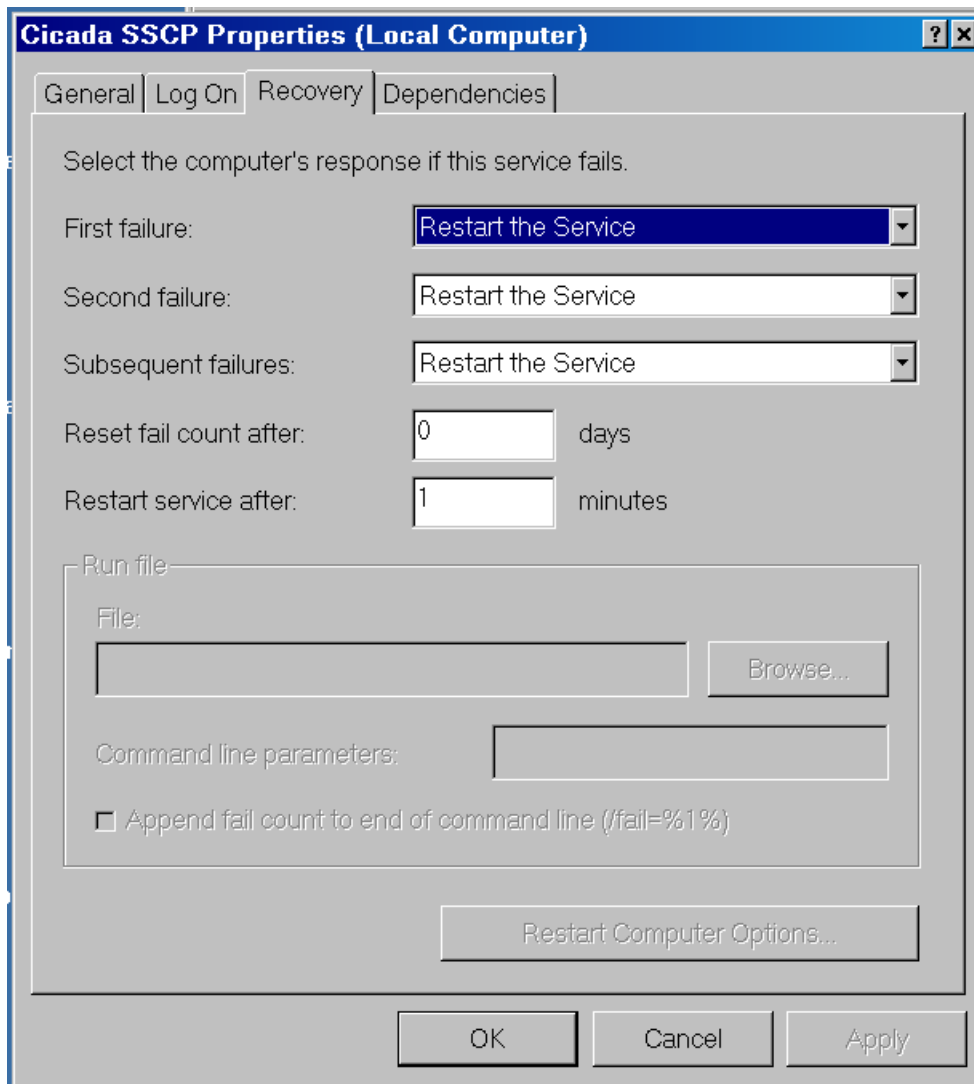
On the General Tab, select startup type as Automatic,click on start the service once all other tabs have been configured.

**Cotinued on the Next Page**



Configure as indicated.

Cotinued on the Next Page



Configure as indicated.